

---

# ***Flying Pigs QRP Club***

## ***Bacon Bits Quarterly***



Flying Pigs QRP Club International, W8PIG  
1900 Pittsfield St, Kettering, Ohio 45420  
E-mail: [n8ie@n8ie.com](mailto:n8ie@n8ie.com) Web Page: <https://fpqrp.org/>

FPQRP membership is open to all licensed QRP operators who reside within 12,000 nautical miles of Cincinnati, Ohio.

---



## ***July 2024***

## Table of Contents

From the Editor.....	Pg. 3
Cover Photo Spotlight.....	Pg. 3
Flying Pig T-Shirt or Hoodie .....	Pg. 3
Michigan QRP Club Weekly QRP Chat – Zoom Teleconference.....	Pg. 4
Miniature Motorcycle Adventures with QRP .....	Pg. 5
1 Watter Gallery .....	Pg. 11
A Brief Evaluation of the XIEGU X-6100 QRP rig .....	Pg. 13
1/8 Wave 20M.....	Pg. 15
From Contest Admin Secret HQ.....	Pg. 21
Our Mission and Club Details.....	Pg. 23

## From the Editor

Welcome to the July 2024 issue of the *Bacon Bits Quarterly Newsletter*!

I am requesting your input for the next issue of the BBQ which will be published on October 7, 2024. A call for articles will go out over social media on September 23. I prefer to receive your contributions in the following formats if possible: .doc, .pdf, .jpg, .txt, or .odt.

Your articles can be about outings you've had, projects you're working on, antennas are always a great topic, SOTA/POTA/WWFF adventures, just about anything amateur radio related with a slant toward QRP.

Please send your contributions to [editor@fpqrp.org](mailto:editor@fpqrp.org)

I look forward to receiving your articles and thanks for your support!

73,  
O. Alan Jones  
N8WQ  
FP#-4371

## Cover Photo Spotlight

Anthony Luscre, K8ZT, FP#-254, provided the cover photo for this month's issue of the BBQ. Thanks for a great picture Anthony!

## Flying Pig T-Shirt or Hoodie

Ok everyone....if you want a T-Shirt or a Hoodie...this is the place.

Order online, pay online, send nothing to me....

<https://ourladysmantleshop.com/collections/flying-pig-shirts>

They have agreed to do onesie orders for us, and not charge us for a bulk printing. The Logo is something that N8IE cooked up for us back in the early days, so it is vintage.

72 es OO  
de KB9BVN

## Michigan QRP Club weekly QRP – Zoom Teleconference

Please join us Thursday (and every Thursday) at 4PM Eastern for the Michigan QRP Club weekly QRP Chat where the main topics will be QRP and other ham interests. It's fun, it's easy, and it's free. You only need a computer, a smart phone, or a tablet that can connect to the Internet. OR if you can't be close to any of those you can join by audio with any standard phone. Just follow the directions below. No software needs be loaded or installed. Anyone can join and non-members are welcome. Details are here:

<https://www.miqrp.net/zoom>

Anyone can take the floor and tell us what you are doing. We will go one by one until all have had a chance to have the floor. There will be time for comments and questions. Please try to stay muted when someone has the floor.

We have a list of future topics:

- QRP Skills and Tools
- Shack logging
- Field logging
- QRP Contesting
- CW practice

If you have suggestions for topics, please send them to:

Ed

AB8DF

ekwik at aol.com

**Editor's Note:** I participated in the Zoom meeting on June 20<sup>th</sup> and enjoyed the comradery of the Michigan QRP Club. I got sidetracked last week and missed the topic of "Batteries" which I am sure was a good one! Stop in and say hello to these guys!

## Miniature Motorcycle Adventures with QRP



### Adventures at Big Walnut Nature Preserve

The day belongs to you and your wife has gone away for the weekend, the kids get picked up and taken on adventures of their own. What can you do with your time? It just happens to be Get Your Park On weekend in the Word Wide Flora and Fauna amateur radio program and even though it has been raining it is about to stop. You need to charge up the newly installed battery in the Honda Monkey, so why not put some miles on it and bring along some radio gear. This is how my Saturday, June 29<sup>th</sup> 2024 went. I have been a member of the WWFF program for as long as I have been part of the POTA program. It is the original parks program that gave roots and data to the popular POTA program, The WWFF program has some incredibly fun events to take part in.

Before getting started on my trip I needed to make sure the dogs are fed. We ended up with three dogs, the oldest is about 10 years and the youngest are just pups at 7 months old. The pups belong to the kids, but Grandpa gets to take care of them when the kids are away.



Once the pups have are fed and given time to run around into the crates they go. My bike is too small to fit any dog on, let alone three. I will not be gone that long, right?

The Honda Monkey Z125 is a very capable motorcycle but its max speed is about 50 MPH, so its design is not to be on the interstates or fast highways. Times exist when you may need to get on a fast highway for some time, but I try to avoid this. The roads are slick with fresh rain on the ground, but the sun has come how and you can see the rain evaporating away off the road. No need to rush, give nature some time to clean itself up and make it safer trip.

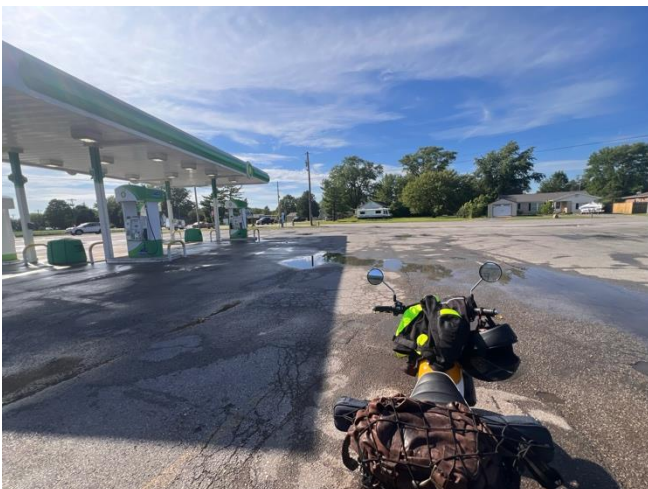
What equipment should I take? The KH-1 has been sent back to Elecraft several times and I have not gotten to know it very well so it will go into my bag. The Elecraft whip antenna that came with it, although it does work-- is not great. I take the MA-12 antenna with me. The MA-12 antenna is also known as the Chelegance MC-750 antenna. It is the exact same antenna for about 2/3rds the price direct from China. I Found mine on Aliexpress.

The key that comes on the KH-1 does simply fine, but after driving on a motorcycle I want to have more comfort operating so I put the Putikeeg paddle into my bag. This is the core amateur radio gear I need. The MA-12 case has everything packed already including the 40m and 80m coils and coax. I grab my iPad mini for easy logging. The rumLog is still my goto app when not using the Icom 705. Mosquito repellent is necessary, and I grab my six shooter incase nature tries anything funny.



**On the way I stop for fuel and grab some premium fuel to replenish over half my tank.**

At 100 miles to the gallon, one stop is enough to fuel this adventure. Of course, other stops may be needed to rehydrate the human body I carry around. The ride to Big Walnut in a car would be a straight shot from my town to a small town called Bainbridge in Indiana. On a small bike I decide to take back roads as much as I can. The back roads are well covered, and the sun did not bake as much rain off as I had hoped. This causes a little more stress, but I slow down and take turns easy and weave my way across the countryside. I know I should make a stop before getting to Big Walnut and use the facilities because at the nature preserve the only facilities are trees and leaves. I didn't think to pack a shovel and paper for a scout style latrine.



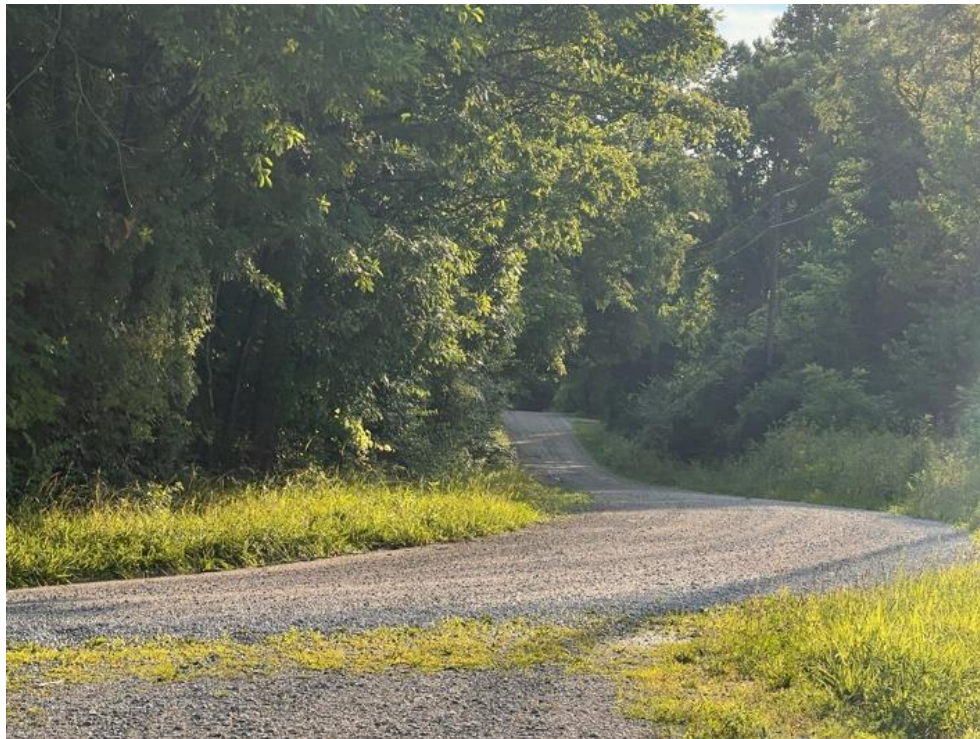
I grab a bottle of diet mountain dew (bad caffeine) and drink about ½ before finishing the trip. The rest of the trip will be on a 55 mph road and I will not be going that fast. So far traffic has been light and only a few people felt the need to pass me. When cars decide to pass you on a wet road they tend to spray you. I am glad I went with a full faced helmet and did not have to taste the road.

My helmet has a blue tooth link to my phone and my phone was playing random songs along the way. Nothing remarkable but it helps pass the time when you are passing endless corn fields. One of the nice parts of riding a bike is feeling the cool spots in the roads. Often you will go down a hill and have some tree cover and cool air tends to hang out for you in these low spots. It is like free air conditioning on hot days like today.

Until you have had the pleasure of feeling a mosquito smashing against your hand, neck or other exposed body part at 50+ miles per hour, you have not lived. As I leave Bainbridge and head towards Big Walnut I see an outline ahead in the road. A very skinny female silhouette walking down a country road. As I get closer, I see three men cross the road and start to walk behind this woman. I hope they are not heading to Big Walnut, I do not like people interrupting my important morse code messages.

The last part of the trip is on a gravel road. I usually forget the road is gravel until I turn onto the road. This time I did not but I did recall that Big Walnut has a nice park bench to watch birds from and this helped me choose Big Walnut over Hall Woods--another close park.

With fresh rain falling I did not think hiking to my favorite spots without good hiking gear would be a smart move alone. Before getting setup, I took the time to lather myself in insect repellent, Normally I avoid chemicals but when you come to place like this on a hot and muggy day with rain you would be ripe for harvesting to mosquitoes and other parasites like chiggers and horse flies. I usually wear long sleeves, jeans and thick long socks when adventuring like this. I forgot long sleeves.



Getting setup took minutes and I had a signal to spot myself. Often at these rural locations cell signal are nonexistent but as time passes on it seems like cell towers get closer and closer to nowhere.





Could I have had an enjoyable time without being spotted? Heck yeah, it is about the ride and amateur radio is just a bonus. I have made trips and forgotten important things and ended up with no airtime and still feel just as fulfilled because of the pleasure of riding.

I decided to operate on 20m first and start out with a good ole QRL? After several QRL? I start to call cq and make a few qsos. Spotting page is working well. The goal for the WWFF program is to make any qsos while in the park, they do not even need to know why you call CQ.

After a while I hear someone calling CQ on top of me. This happens often and I tried to ignore it, but they are too strong so I QSY a few times and finally break my goal of 10 contacts. Switching the antenna to 40m is extremely easy. I put the coil inline on the antenna and lower the whip to the 7 MHz laser etched marking and then adjust the radio as needed.

After being on 40m for a bit another station starts to call CQ on top of me. This is so common when you run QRP, I do not know why I even try to hold my frequency. I again QSY and make a few more great contacts and then decide I should get home to the puppies.

As I was operating out in the middle of nowhere, I saw three different ORV come by and if I had not been in the parking lot I suspect the trails may have gotten some use. I am guessing they would be in some trouble if they get caught, but it sure looks fun.

Big Walnut has two sections with different trails and there is the Big Walnut River that runs through it. It is truly a hidden Gem in Indiana and if you are in the area, and you enjoy nature and hiking you should come and check it out. For those who cannot, watch for my photos from my trips. I wrapped up the trip with 16 qsos and time to spare for the ride home. The trip home was less exciting than the trip in. I had more people in a hurry try to go around me and that is ok.



I stopped for grub on the way home and brought all the gear in with me, I have trust issues leaving my gear on my bike. I wish I had locking storage but part of the journey on small bikes is making it work with little luxury like running our beloved QRP radios.

The dogs were happy to see me home and my wife and kids are missed, but I had a fun day and nice journey to play with RF even if in small doses.

73 and stay radio active with amateur radio.  
DE Wayne AC9HP

**One Watter Gallery**  
Don Richards, VE3IDS



**40 Meter One Watter**



**30 Meter One Watter in memory of Diz W8DIZ**

# A BRIEF EVALUATION OF THE XIEGU X-6100 QRP RIG

By: Jim Sheldon, W0EB, FP#-616



I'll start out by explaining that I've never really been a fan of any of the Japanese/Chinese low power (not always true QRP) rigs that have been around or have recently come on the market. My QRP rigs up to this point have either been home brew or from Elecraft, having owned a K1, KX1, KX3 and KX2 in that order. I eventually sold all of them over the past couple of years when I pretty much got too old to travel very far. The last one of the Elecraft rigs (a KX2) went to Brian Murrey, KB9BVN (FP#-57) who has been having a lot of fun with it in POTA operations.

Not too long after selling Brian my KX2, I realized, with the world situation what is today, it might be a good idea to have some sort of a very portable backup rig just in case some big disaster killed the ham shack rigs and/or antennas. Being on a very fixed income, I couldn't really afford to buy another Elecraft KX3 or KX2 but I did pretty much want all the HF bands and something with adjustable power up to 10 watts or so output, especially if SSB became necessary as so many new hams do not know how to operate CW anymore. My portable rig of choice needed a built in keyer (I have a number of portable paddles and hand keys) and also a built in, wide range, antenna tuner to handle most vertical and wire antennas that could be made portable and erected quickly in the field to allow for quick changes of position if necessary in emergencies.

I was going through the available rigs with fast delivery on Amazon that were priced in the \$400 to \$600 range. I came across the Xiegu G90 which would go up to 20 watts in all modes and had a nice tuner with decent reviews. Alas, the one I received worked for about 30 minutes and died so I returned it for a full refund (main reason I use Amazon as this process is VERY easy).

Next, I saw a good review (don't remember where now) for the Xiegu X-6100 which is only 10-12 watts output but roughly the same size as the Elecraft KX2/KX3, but has a 4" color LCD display with spectrum/waterfall display, has a built in tuner and rechargeable battery (5 watts max output on internal battery – up to 10+ watts output on external 9-15 volt power supply), the same wide range tuner the G90 had and Amazon had a sale price on it for about \$550 which was just within my budget limit so I ordered one. It arrived in a couple of days and I started learning it.

With this radio there was a learning curve, even for one with my experience, but it didn't take long to get it on the air and start making contacts with it. I worked over 100 stations (mostly East and West coast US stations, but did also work Japan, Croatia, Algeria and even an exotic one, V85 (Brunei, Dar-Es-Salaam) in the first week I had it! Of course, the current solar conditions had a lot to do with that but I'll take it!

The X-6100 is proving to be a great little low power rig and I have put together a "Go Box" (still looking for a decent carry case that's not too big/heavy but will carry the rig, a couple of solar rechargeable power packs, my key paddles, a spooled up wire antenna that will cover 80-10 meters using the tuner that I can pack quickly and will fit easily in the spare tire compartment of the car in case my wife and I need to "Head for the hills" quickly one day.

All in all, the X-6100, even if it IS Chinese made, is a very capable and so far, reliable rig, that once you learn the main operating quirks, will work with simple wire antennas using a (supplied) BNC to dual binding post adapter, or pretty much any coax fed antenna that can be connected to the BNC RF output connector. Remember, there is an internal antenna tuner that will tune almost anything.

Be careful buying a used radio though, as some of the earlier ones had a serious problem with interference from AM Broadcast stations within a few miles (depending on the AM station's power). That problem seems to have been corrected in the later versions as the one I received has not been afflicted by that problem and I have 3 (up to 10KW) AM stations within 3-10 miles of my home QTH. There IS an external, in-line broadcast interference filter available that, according to reviews on the X-6100 Facebook page does alleviate the problem and does not interfere with the antenna output/input even though it is connected right at the BNC antenna jack on the radio.

The X-6100 turned out to be a decent little low power/portable rig at a halfway decent price. As I write this there is a solid rumor that Xiegu is coming out with an even more improved version called the X-6200, but So far the projected price for that one is between \$700 to \$800. I haven't seen one yet so I don't know if the improvements are worth the higher price. I think I'll hang onto the 6100 as it does everything I want it to (mainly CW) anyway.

Jim – W0EB  
FP#-616

Visit: [www.zaarc.org](http://www.zaarc.org)  
**1/8 Wave 20m**  
John Leahy, KK4ITX  
[jleahy00@yahoo.com](mailto:jleahy00@yahoo.com)

A few weeks ago, I went up to Brooksville, FL with Ron (N9EE) and his QRP group on a NAQCC Chapter outing that they were having at a park. I wanted to test an antenna that I had read about and built my version of it mounting it on a \$4 camera Flea Market tripod. The antenna is only a 1/8 wave at 20m and works close to the ground. It worked quite well with WSPR @ 200mW yielding over 385 hits in about 2 hrs.

It worked so well that I thought that I might be able to use it in Maine at the beach and while I could use the tripod, I thought that perhaps a mag mount would be more compact easier to use in the crowded parking lots that I usually work from. So, I needed a magnet, bracket and some time.

#### Parts list

- Harbor Freight 3" magnet with the hook ground off
- 1-1/2 x 1/16 Alum Angle (my stock) (2) pcs cut 2-1/2" long
- 1/4-20 x 1/2" bolt, washer and nut
- Female/Female BNC (My stock)
- RT angle BNC Male/Female
- (2) sets 6-32/1/2 screws, nuts
- 8-32 x 3/4 screw, nut and wing nut for counterpoise, if needed.

I assembled all of the parts, covered those that I didn't want painted with masking tape and made it a pretty black and tried out the new setup. After just 2 cycles of WSPR (1 hour) I had 806 spots reporting me with the furthest 2344 miles (VE6JY). See the attached pics for more detail.











Obviously, this is really a compromise antenna but when you find yourself in tight spaces or want a light load to carry up a summit you can deploy this guy and use your height or beach to make up for the shorter antenna.

Just amazing to me that 200mW on something of this size can get the job done!

72,  
John  
KK4ITX



## From Contest Admin Secret HQ:

Brian Murrey KB9BVN  
FP-57

### Calling all Flying Pigs!! Calling all Flying Pigs!!

Gang, the monthly Run for the Bacon Sprint is so much fun, and the band conditions are PERFECT for QRP, so why not join the flock and have a blast with us? It's easy!

Here is a listing of upcoming events through September 2024.

July 21<sup>st</sup> - Run for the Bacon CW Sprint (2 Hours) 23:00Z to 01:00Z – Use the Auto logger.

August 19<sup>th</sup> - Run for the Bacon CW Sprint (2 Hours) 23:00Z to 01:00Z – Use the Auto logger.

September 15<sup>th</sup> - Run for the Bacon CW Sprint (2 Hours) 23:00Z to 01:00Z – Use the Auto logger.

RFTB Autologger is at <https://qrptest.com/pigrun/>

ALSO...for you Flying Pigs new to CW, or old to CW and want to participate in a slow code sprint event, we have the 40m Walk for the Bacon Slow Code CW Sprint. The WFTB sprints are 1 hour each night.

40m WFTB runs on the first Wednesday and Thursday of every month. The Wednesday night sprint begins at 00:00Z Wednesday evening for 1 hour from 00:00Z to 01:00Z, then it continues Thursday night from 02:00Z to 03:00Z. All logging is done on the autologger.

Evening of Wednesday July 3<sup>rd</sup> at 00:00Z to 01:00Z on 40m 7050 Khz to 7065 Khz.

Evening of Thursday July 4<sup>th</sup> at 02:00Z to 03:00Z on 40m 7050 Khz to 7065 Khz.

Evening of Wednesday August 7th at 00:00Z to 01:00Z on 40m 7050 Khz to 7065 Khz.

Evening of Thursday August 8th at 02:00Z to 03:00Z on 40m 7050 Khz to 7065 Khz.

Evening of Wednesday September 4th at 00:00Z to 01:00Z on 40m 7050 Khz to 7065 Khz.

Evening of Thursday September 5th at 02:00Z to 03:00Z on 40m 7050 Khz to 7065 Khz.

WFTB 40m logger is at: <https://qrptest.com/pigwalk40/>

20m WFTB runs on the third Wednesday and Thursday of every month. The Wednesday night sprint begins at 00:00Z Wednesday evening for 1 hour from 00:00Z to 01:00Z, then it continues Thursday night from 02:00Z to 03:00Z. All logging is done on the autologger.

Evening of Wednesday July 17th at 00:00Z to 01:00Z on 20m 14061 Khz to 14065 Khz.

Evening of Thursday July 18th at 02:00Z to 03:00Z on 20m 14061Khz to 14065 Khz.

Evening of Wednesday August 21st at 00:00Z to 01:00Z on 20m 14061 Khz to 14065 Khz.

Evening of Thursday August 22<sup>nd</sup> at 02:00Z to 03:00Z on 20m 14061 Khz to 14065 Khz.

Evening of Wednesday September 18th at 00:00Z to 01:00Z on 20m 14061 Khz to 14065 Khz.

Evening of Thursday September 19th at 02:00Z to 03:00Z on 20m 14061 Khz to 14065 Khz.

WFTB Autologger is at: <https://qrptest.com/pigwalk20/>

Good luck and we hope to hear from everyone on the air!!

#### Sprint Statistics for January through June 2024

DATE	EVENT	LOGS SUBMITTED	TOP SCORE	TOP FLYING PIG
01/21/24	RFTB	9	119	WB9HFK - Mark
02/18/24	RFTB	6	32	AA2YO - Gene
03/17/24	RFTB	22	528	NQ2W - Will
04/21/24	RFTB	41	2150	NQ2W - Will
05/19/24	RFTB	16	410	KA2KGP - TOM
06/16/24	RFTB	22	1533	NQ2W - Will

With 6 RFTB's complete, NQ2W – Will, is in the lead with three top scores!

01/03/24	WFTB40	10	27	WB9HFK - Mark
02/07/24	WFTB40	6	22	WB9HFK - Mark
03/06/24	WFTB40	6	17	AA2YO - Gene
04/03/24	WFTB40	10	27	K9NUD - Steve
05/01/24	WFTB40	7	20	W4NLT - Andy
06/05/24	WFTB40	18	48	KB9BVN - Brian

With 6 WFTB40's complete, WB9HFK – Mark, is in the lead with two top scores!

01/17/24	WFTB20	5	6	N3AZB - Dennis
02/21/24	WFTB20	10	15	AA2YO - Gene
03/20/24	WFTB20	17	38	WB9HFK - Mark
04/17/24	WFTB20	19	35	AA2YO - Gene
05/15/24	WFTB20	11	27	WB9HFK - Mark
06/19/24	WFTB20	13	21	WB9HFK - Mark

With 6 WFTB20's complete, WB9HFK-Mark is in the lead with three top scores!

The top finisher at the end of the year will receive this fabulous hand crafted, laser engraved, coffee coaster! This trophy is made of the finest hardwood, and artistic craftsmanship by Jim WOEB. It's still anyone's game!



**OUR MISSION:**

- 1: Have Fun.
- 2: No rules.
- 3: Be a friendly group which enjoys ham radio and sharing skills with their fellow hams.

**CLUB MEMBERSHIP:**

To join The Flying Pigs QRP Club, visit <https://fpqrp.org/join.php>

**CLUB EMAIL REFLECTOR:**

To subscribe to the club email reflector, send a message to [fpqrp+subscribe@groups.io](mailto:fpqrp+subscribe@groups.io) with the subject "subscribe" or go to the Flying Pigs groups.io page at <https://groups.io/g/fpqrp> and click on the "Join" button.

**CLUB DISCORD SERVER:**

<https://discord.gg/RAEwTFmF>

**CLUB E-MAIL POLICY:**

These are not rules, just common sense. Club email is not moderated, as we are not a stuffy group. You can send off topic messages about most subjects but please keep it clean and in good taste. We do like good-natured ribbing and joking with each other, but we will not tolerate flaming other members or spamming the group. We will remove offenders who abuse our open policy. The word eBay is allowed.

**CLUB WEB PAGE:**

The club web page is our forum for sharing projects, and information about us. You are encouraged to submit your ideas and projects to be added to the web page. <https://fpqrp.org/>

**CONTEST RESOURCES:**

<https://qrpcontest.com/>

<http://qrpspots.com/>

**FPQRP OFFICIAL FREQUENCIES:**

160m – 1.814MHz	80m – 3.564MHz	40m – 7.044MHz	30m – 10.110MHz
20m - 14.062MHz	17m – 18.100MHz	15m – 21.064MHz	12m – 24.910MHz
10m – 28.064MHz	2m Hamfest Frequency – 145.72 Simplex		

**PROBLEM REPORTING:**

If you are having problems with email, the web pages, or a fellow club member, please report this to either:

Dan, N8IE at [dann8ie@gmail.com](mailto:dann8ie@gmail.com)

Jim, W0EB at [W0EB@cox.net](mailto:W0EB@cox.net)

